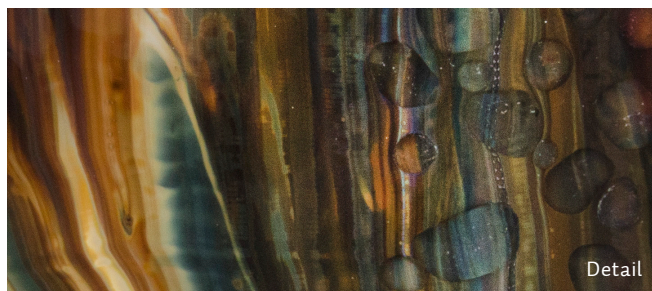


© Quick Tip: Working with Petrified Wood



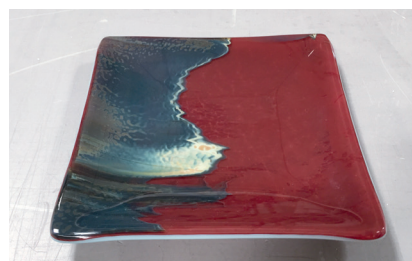
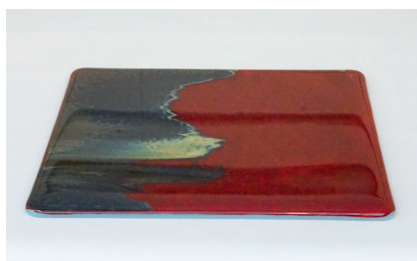
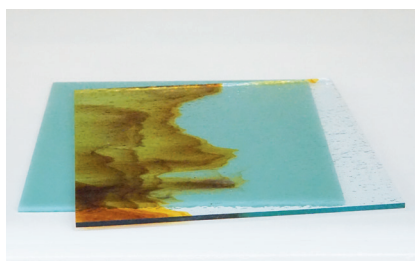
Petrified Wood is Bullseye's magical unicorn streaky. Its unique combination of glasses results in dramatic internal reactions at full-fuse temperatures. Here are two ideas for making this glass sing.

Copper Reactions

The Clear areas of Petrified Wood contain Red Reactive Clear, a style that reacts with select copper-bearing glasses, developing deep red hues where they meet. Neighboring sepia-hued areas develop a variety of rich, earthy effects.

Tips:

- The red reactions may continue to deepen with additional heatwork. Maintain color with lower temp slump firings and other cautious heatwork. This piece became darker with a 1225°F slump firing.
- Other favorite copper-bearing styles for a range of deep reds include 3mm Opalescent and Transparent Turquoise Blue (000116 and 001116) and Light Cyan (000216-0030).



Base: Robin's Egg Blue (000161-0030) Cap: Petrified Wood (002971-0030). Mold: 8758 Square Nesting Plate, medium.

Displacement with Frit

Sepia-hued areas of Petrified Wood strike with varying opacity and interest. Play up this organic effect with various grain sizes of Clear frit. We used Coarse and Extra Large. The frit rounds out and sinks in, creating shallow pools.

Tips:

- Leave space between the grains and give them room to melt and displace the underlying glass.
- The earthy characteristics of Petrified Wood are also sensitive to heatwork, especially multiple full-fuse firings. Again, maintain these with lower temp slump firings and other cautious heatwork.

Expect variation, which can occur within a single sheet & throughout production runs of Petrified Wood.



Base: Tekta Clear (001101-0030), Cap: Petrified Wood (002971-0030) with Clear frit (001101-0003 and -0005) on top. Mold: 8630 Round Slumper.