

# How To... Glass Seascapes Starter Kit



*Produces a seascape scene using Bullseye glass powders, with plenty of powder left over for future projects.*

## In the kit:

- 4 x Bullseye Powder (100g)
  - Powder Blue Opal (0108)
  - Light Cyan Opal (0216)
  - Egyptian Blue (0164)
  - Marzipan Opal (0138)
- 1 x Bullseye White Opal sheet glass (3mm) 15x10cm
- 1 x Bullseye Tekta (3mm) 15x10cm
- Powder Ball Sifter
- Plastic Props

## You may also need:

- Safety Glasses
- FFP3 Dust Mask
- Paper
- Soft brush
- Glassline Pens
- Bullseye Stringers/Confetti
- Bullseye Fine White Opal Frit
- Bullseye Clear Powder
- Bullseye Thinfire Paper
- Glass Cleaner
- River Rocks Kit
- Kiln and Kiln Shelf

## Tips:

*Try tack fusing the first layer and then adding detail with more powder, Glassline pens, stencils, Bullseye Confetti, candle-bent stringers etc. Then sift a thin layer of clear powder before adding the clear cap glass and firing to a full fuse.*

*Use opal powders. Transparents can look washed out when used in thin layers.*

**Need more help?** Take a look at the Knowledge Base on our website.

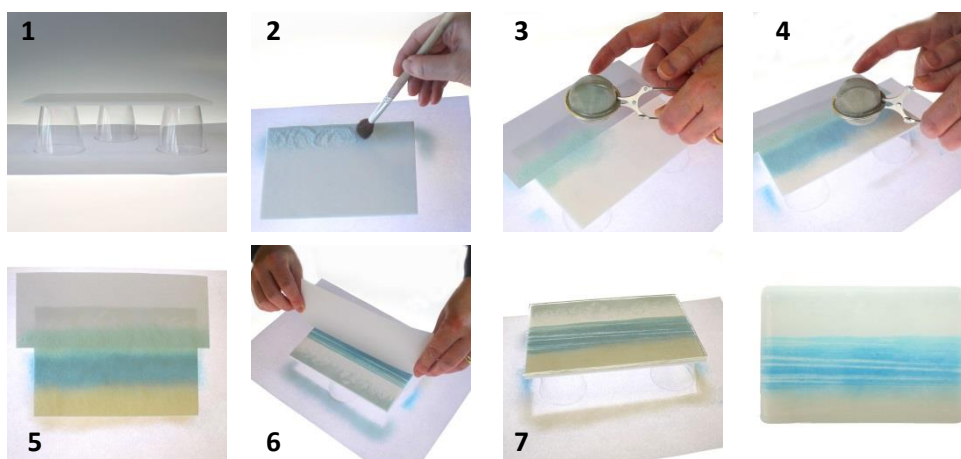
[www.warm-glass.co.uk](http://www.warm-glass.co.uk)



**Bullseye glass powders are an excellent medium for producing seascape scenes.** *This kit contains everything you need to create your own simple seascape piece. Always wear a dust mask when working with glass powders.*

## To make a basic seascape scene:

1. Clean the White Opal base glass with a glass cleaner and place on the four plastic props so the glass is raised above the work surface. It is a good idea to put paper underneath to catch any powder.
2. With the powder sifter, sift the Powder Blue Opal (0108) glass powder over the top edge of the glass to represent the sky. The powder should be at least 2mm thick at the top. Stipple with a soft brush to create clouds.
3. Use the edge of a piece of paper to mask off the sky and sift Light Cyan (0216) powder, again around 2mm thick. This will be the sea.
4. Sift the Egyptian Blue (0164) glass powder below this, allowing the two sea colours to overlap.
5. Sift Marzipan (0138) powder along the bottom edge to create a beach.
6. Using the edge of the paper, stipple the sea powder to create waves.
7. Cap with the clear glass and fire using the Full Fuse schedule below.



*Try incorporating a river rocks part sheet to create a pebbly beach. Fine White Opal frit makes a good sea foam effect.*

## Full Fuse Firing Schedule (for glass 6mm thick):

Segment	Rate (Degrees/hour)	Temperature	Hold
Segment 1	222°C (400°F)	677°C (1250°F)	30 minutes
Segment 2	333°C (600°F)	804°C (1480°F)	10 minutes
Segment 3	999°C (AFAP)	482°C (900°F)	60 minutes
Segment 4	83°C (150°F)	371°C (700°F)	End