



Thermocouple Replacement FireBox and HotStart Models

Identifying the Correct Thermocouple

Skutt uses a number of different thermocouples depending on the model. Identifying the correct one for your kiln is critical to the accurate performance of your kiln. Below you will find the 3 different types used for the Hot Start and FireBox Models.

Part #2498



Fits FireBox 14, HotStart and
FireBox 8x4 GMLT

Part #3360



Fits FireBox 8x6 and 8x4

Part #2248



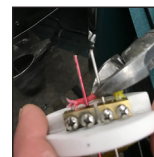
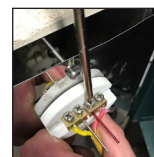
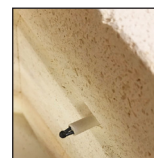
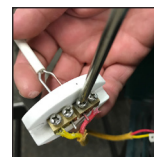
Fits FireBox 8

Part #2498

1. Open control box.
2. Remove thermocouple block screws.
3. Slide out thermocouple.
4. Loosen thermocouple set screws.
5. Insert new thermocouple and slide back through the kiln. Be sure the thermocouple leg with the red dye is on the same side of the block as the red thermocouple wire.
6. Position thermocouple in the block so the tip of the thermocouple is 5/8" from kiln wall face then tighten down the set screws.
7. Slide it back out of the kiln and trim the thermocouple ends as close to the block as possible with side cutters.
8. Replace thermocouple block screws.
9. Close the control box and replace the screws.
10. Follow instructions in your manual to perform a test fire.

Part #3360

The instructions for this thermocouple are the same except for the fact that you do not need to trim the thermocouple legs and you remove and install the thermocouple from inside of the kiln.



(continued)

Part #2248

Loosen the set screw on the thermocouple flange and slide the old thermocouple out.

Disconnect the plug from the pyrometer.

Plug the new thermocouple into the pyrometer making sure the sticker on the plug is facing up.

Slide the new thermocouple into the thermocouple flange until the tip is protruding 5/8" into the chamber and tighten the set screw.

Follow your manual's instructions for performing a test fire.