



MAG

Flat Bed, Polisher / Grinders

The MAG range of Flatbed glass grinding machines are designed from the bottom up to perform to the highest standards and with the highest reliability by ironing out the common mistakes made over the years with other flat bed grinders from elsewhere.

We used our considerable experience in the glass field and with the help of recognized industry leaders, produced a UK built flatbed glass grinder to the highest of standards.

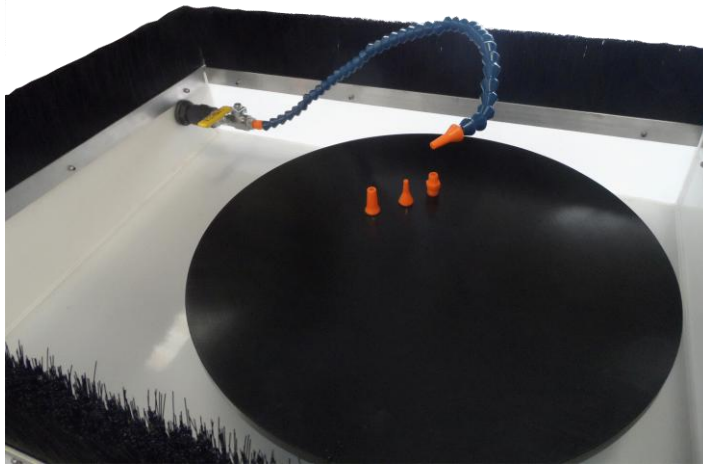
Features include

- Heavy steel framework, powder coated and oven baked.
- Self aligning, sealed bearings.
- Bearing water protection shield.
- Cast iron wheel head.
- Heavy duty motors with variable speed control. 100 - 430 RPM at the disc.
- Extremely quiet and smooth operation.
- Foot pedal operation and speed control.
- Lock Load flexible water feed system with multiple nozzles.
- Easy and precise water control valve.
- Anti splash brush top to tray.
- Easy to connect to water supply with standard hosepipe clip-on fitting.
- Ultra-strong Polypropylene tray with anti-spray, replaceable brush top.
- Available for 12" (30cm), 18" (45cm) and 24" (60cm) discs.
- KFB versions available for slurry/grit with heads up to 27.5" (70cm).
- Can be used from any 13amp standard socket, (or non-UK single phase socket outlet).
- British built and fully CE compliant.
- Kilncare reliability.



The MAG are for use with self adhesive or magnetic diamond discs which can be purchased separately.

Lock Load flexible water feed with flow control and interchangeable nozzles.



The MAG has a cast iron wheel head to accept adhesive backed or magnetic grinding disks. It is powered by an AC industrial motor through a V belt reduction drive and gearbox. Speed drive is controlled from a sophisticated AC inverter drive which gives a extremely smooth speed variation and high torque characteristics accompanied by extremely quiet operation.

The rotation speed is controlled by the footpedal and the speed remains relevant to the position that the pedal is left in meaning freedom to work and move whilst having hands free speed control.

The MAG has a lockload flexible water distribution system for connection to a mains water supply, which connects with standard clip-on hose pipe connector available from any DIY store.

The lockload system comes with three different nozzles to suit any application.

The water supply is accurately controlled with its lever control valve.

Easy connect water feed.



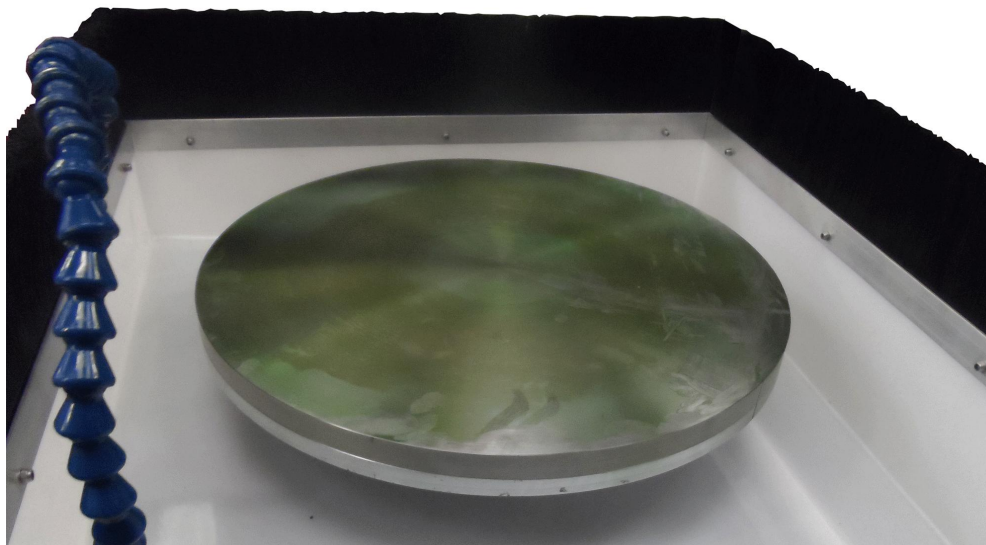
We believe the MAG and KFB are the best flat bed grinders in the world!!!

KFB version.

The KFB version is basically a MAG that is suitable for slurry/grit use rather than with magnetic discs. The unit is identical in every way, as the MAG had all the features required for a grit grinder built in during design. By far the most important is the top bearing protection that stops not only water, but aggressive grit entering the bearing.

The wheel head on The KFB consists of a thick, steel wear plate surface that is ground flat during manufacture. As the head wears over time it is easily removed for re-skimming or can simply be replaced by undoing 4 nuts under the boss wheelhead, no need for a machine strip down.

KFB steel, removable wear plate on top of boss wheelhead



Optional Extras;- Rotating shelf unit, Braked swivel castor wheels,

Technical Data

Model	Disc Size	Motor Power	Plug Top	Size (mm)
MAG 30	30cm (12")	0.37 kw	Yes	550 x 470 x 1070 #
MAG 45	45cm (18")	0.75 kw	Yes	650 x 780 x 1070 #
MAG 60	60cm (24")	1.5 kw	Yes	800 x 930 x 1070 #
KFB 30	30cm (12")	0.37 kw	Yes	550 x 470 x 1070 #
KFB 45	45cm (18")	0.75 kw	Yes	650 x 780 x 1070 #
KFB 60	60cm (24")	1.5 kw	Yes	800 x 930 x 1070 #
KFB 70	70cm (27.5)	1.5 kw	Yes	800 x 930 x 1070 #

MAG Disc surface height is 940mm

KFB Disc surface height is 955mm



The Kiln Works, 907 Leek New Road, Baddeley Green, Stoke on Trent, Staffs, United Kingdom, ST2 7HQ
TEL 01782 535915 / 535338 e-mail sales@kilncare.co.uk web www.kilncare.co.uk