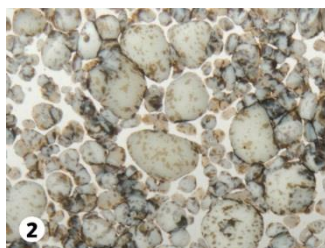


## Reaction Action with Bullseye Glass

When certain Bullseye glasses are fired in contact with one another, their chemistries interact at the interface (where the glasses touch) to create many effects and colours. Here are examples of some of our favourite reactions including copper + sulphur, copper + reactive, and lead + sulphur:



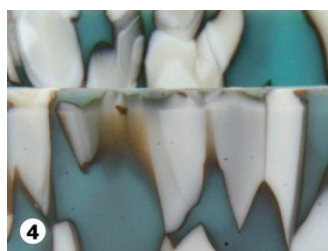
**1**  
Copper: [Light Turquoise Blue \(1416\) sheet](#)  
Sulphur: [Medium Amber \(1137\) sheet](#)



**2**  
**River Rocks Kit** available from Warm Glass for this effect  
Lead: [Sunset Coral \(1305\) Powder](#)  
Sulphur: [French Vanilla \(0137\), medium](#) and [coarse frit](#)



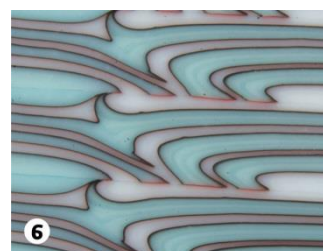
**3**  
Copper: [Light Cyan \(0216\) rod](#)  
Sulphur: [Golden Green \(0227\) rod](#) (image shows bowl made with 'drop out' slumping technique)



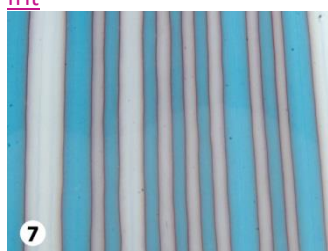
**4**  
Sulphur: [French Vanilla \(0137\) coarse frit](#)  
Copper: [Turquoise \(0116\) coarse frit](#)



**5**  
Sulphur: [French Vanilla \(0137\) sheet](#)  
Copper: [Steel Blue \(0146\) powder](#)



**6**  
Copper: [Robin's Egg Blue \(0161\) sheet](#)  
Reactive: [Reactive Cloud Opal \(0009\) sheet](#)



**7**  
Copper: [Light Cyan \(0216\) sheet](#)  
Reactive: [Reactive Cloud Opal \(0009\) sheet](#)



**8**  
Copper: [Robin's Egg Blue \(0161\) sheet](#)  
Reactive: [Spring Green \(0126\) Vitrigraph stringer](#)



**9**  
Sulphur: [French Vanilla \(0137\) sheet](#)  
Copper: [Light Aquamarine Blue \(1408\), medium](#) and [coarse frit](#)

Resources for these reactions as well as others are available from the [Knowledge Base](#) in the Kilnforming Guides section under [Reactive Glass](#), including:

- Get a Reaction: Bullseye Reactive Glasses (chart)
- Reactive Potential of Bullseye Glass (chart)
- Quick Tip: River Rock Reaction

### Learn more

Subscribe to the [Bullseye Online Education](#) program for video tutorials and more.

Thanks to Bullseye Glass Co. for the information in this guide.